

Frayer Model Vocabulary Slides

Student Activity: In this activity, students are given a term and definition. They then list characteristics of the term and find examples and non-examples.

It also includes slides for reading the passage and taking notes, short answer questions, multiple choice questions, and a discussion worksheet for open-ended prompts.

How to share with students: These pages can be assigned digitally using an LMS (like Google Classroom), where students can work on their own slide decks via “Make a Copy for Each Student.” Each slide is set up with text boxes for students to type in.

Please Note: Because Diffit resources can vary in length, be sure to check the formatting on each slide.

Learn More: [Please reach out](#) with any questions or feedback. You can also learn more on our [FAQ page](#), or get more resources at [Diffit.me!](#)

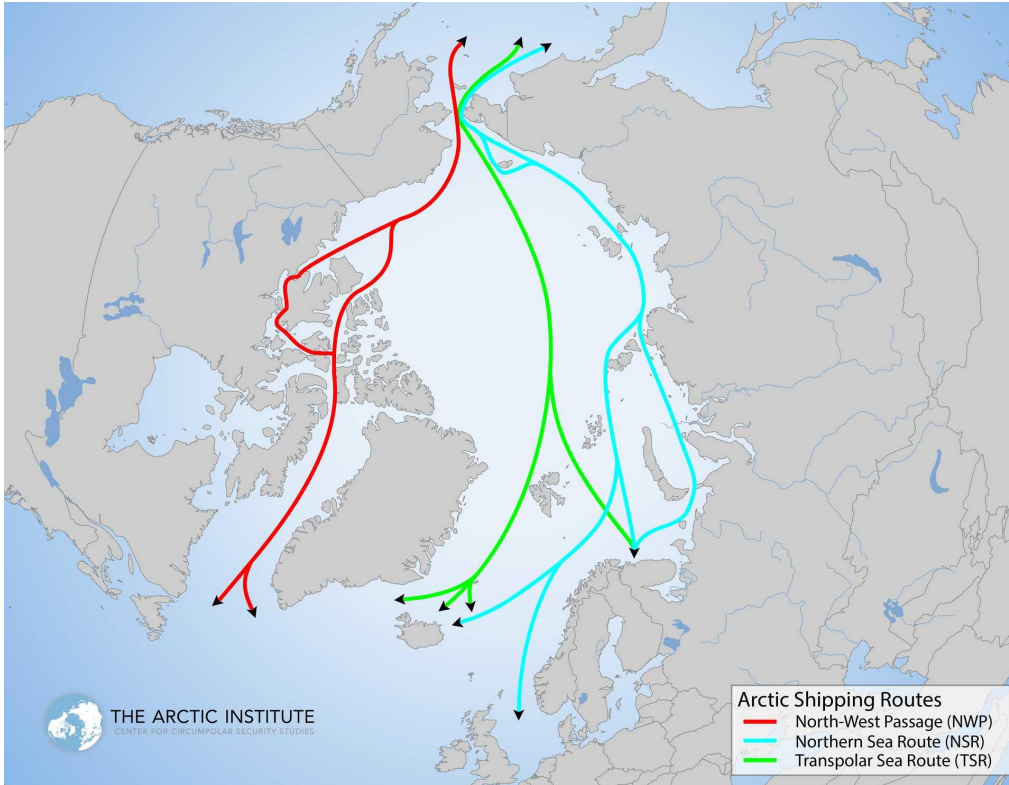
Suggested Lesson Flow:

1. Students complete a Notice/Wonder Image Analysis.
2. Students complete vocabulary slides prior to reading.
3. Have students read and take notes.
4. Have students go through the Multiple Choice Questions. Students will answer each question and explain their thinking.
5. Have students complete the Short Answer Questions.
6. Have students complete the Open Ended Questions and discuss with partners or groups.

Feel free to edit, remix, and use this resource however works best for you and your students! [Find editing tips here!](#)

Image: Notice and Wonder

Instructions: Look at the image and write down 2-3 things you notice (key details, main ideas, themes) and then write down 2-3 things you wonder (questions you have because of the image, things you are curious about when you look at the image.)



Notice

What do you notice?

Wonder

What do you wonder?

Vocabulary Practice

Definition

Dangerous and unpredictable

Characteristics

Word:

treacherous

Examples

Non-Examples

Vocabulary Practice

Definition

Extremely large or great

Characteristics

Word:

immense

Examples

Non-Examples

Vocabulary Practice

Definition

Sudden and striking

Characteristics

Word:

dramatic

Examples

Non-Examples

Vocabulary Practice

Definition

In a way that is widely known for a particular negative quality

Characteristics

Examples

notoriously

Non-Examples

Vocabulary Practice

Definition

Able to be maintained at a certain rate or level over a period of time, especially without depleting natural resources.

Characteristics

Examples

Word:

sustainable

Non-Examples

Vocabulary Practice

Definition

To experience or be subjected to something, typically something unpleasant or challenging.

Characteristics

Examples

Word:

undergo

Non-Examples

Vocabulary Practice

Definition

Not able to be predicted or anticipated; characterized by a lack of regularity or consistency.

Characteristics

Examples

Non-Examples

Word:

unpredictable

Read and Take Notes

The Arctic, a region of immense ecological and geopolitical significance, is undergoing a dramatic transformation due to climate change. The melting of sea ice has opened up new shipping routes, attracting increased maritime activity and raising concerns about the potential environmental and cultural impacts. The Northern Sea Route (NSR), a passage along the northern coast of Russia, has become a focal point for this burgeoning shipping industry.

Take Notes Here:

Read and Take Notes

The NSR offers a shorter and potentially more efficient route for vessels traveling between Europe and Asia, bypassing the Suez Canal. This has attracted significant interest from various industries, including oil and gas extraction, tourism, and transportation. However, the allure of the NSR comes with significant risks. The Arctic environment is notoriously harsh, with unpredictable weather conditions, thick sea ice, and limited infrastructure. Navigating these treacherous waters requires specialized vessels, experienced crews, and advanced technology.

Take Notes Here:

Read and Take Notes

The increased shipping activity in the Arctic poses a significant threat to the region's delicate ecosystems. Oil spills, air and underwater noise pollution, and the introduction of invasive species are all potential consequences of increased maritime traffic. These threats are particularly concerning for Indigenous communities who rely on the Arctic's natural resources for their livelihoods and cultural practices.

Take Notes Here:

Read and Take Notes

The geopolitical implications of the NSR are equally complex. The route traverses Russia's territorial waters, giving Moscow significant control over its use. This has led to concerns about potential conflicts over access and resource exploitation. The NSR has also become a strategic asset for Russia, allowing it to project its military power in the Arctic region.

Take Notes Here:

Read and Take Notes

Despite the challenges and risks, the NSR is likely to play an increasingly important role in global shipping in the coming years. The potential economic benefits of the route are too great to ignore, and the demand for Arctic resources is only expected to grow. However, it is crucial to ensure that this development occurs in a sustainable and responsible manner, minimizing the environmental and cultural impacts while respecting the rights and interests of Indigenous communities.

Take Notes Here:

Multiple Choice Question

1. What is the primary reason for the increased interest in the Northern Sea Route (NSR)?

- A) The NSR offers a shorter and potentially more efficient route for vessels traveling between Europe and Asia.
- B) The NSR is a strategic asset for Russia to project its military power in the Arctic region.
- C) The NSR provides access to abundant oil and gas resources in the Arctic.
- D) The NSR allows for the development of new tourism opportunities in the Arctic.

Which answer did you pick and why?

Multiple Choice Question

2. What is a major concern regarding the increased shipping activity in the Arctic?

- A) The potential for increased trade and economic development in the region.
- B) The potential for conflicts over access and resource exploitation.
- C) The potential for the discovery of new species in the Arctic.
- D) The potential for the development of new technologies for Arctic navigation.

Which answer did you pick and why?

Multiple Choice Question

3. What is the author's stance on the development of the NSR?

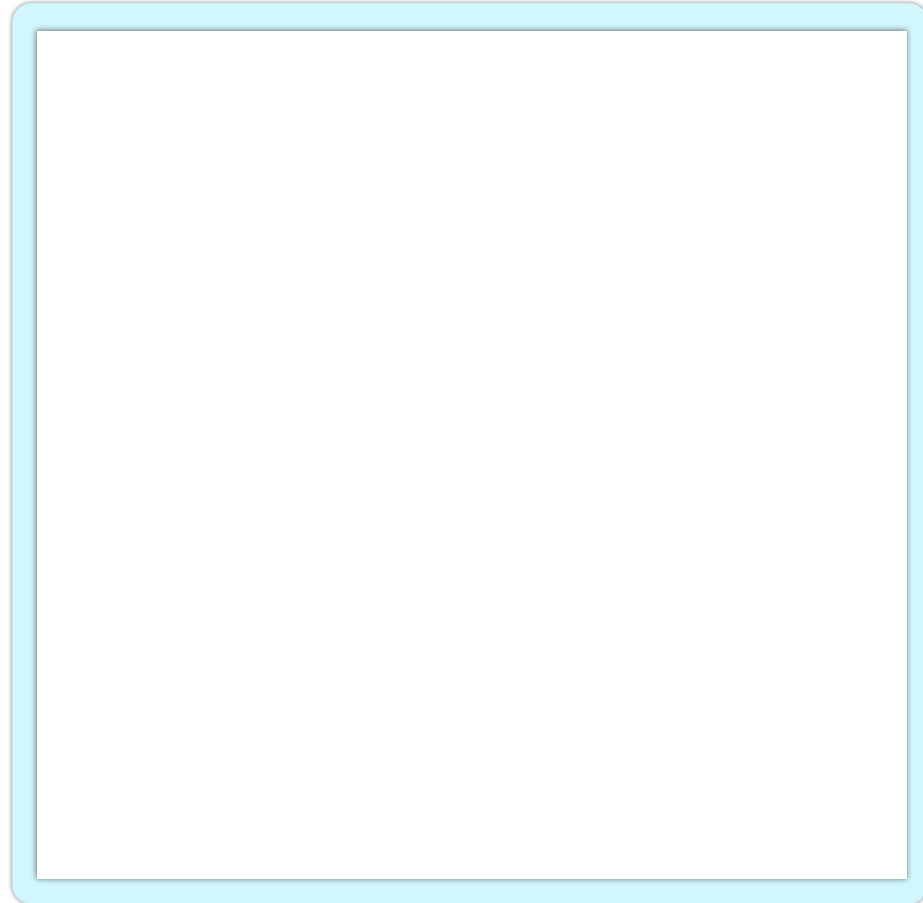
- A) The author believes that the NSR should be developed as quickly as possible to take advantage of its economic benefits.
- B) The author believes that the NSR should be developed with caution to minimize environmental and cultural impacts.
- C) The author believes that the NSR should be developed only if it benefits Indigenous communities.
- D) The author believes that the NSR should be developed only if it benefits Russia.

Which answer did you pick and why?

Short Answer Question

1. What are two specific examples of environmental threats posed by increased shipping activity in the Arctic?

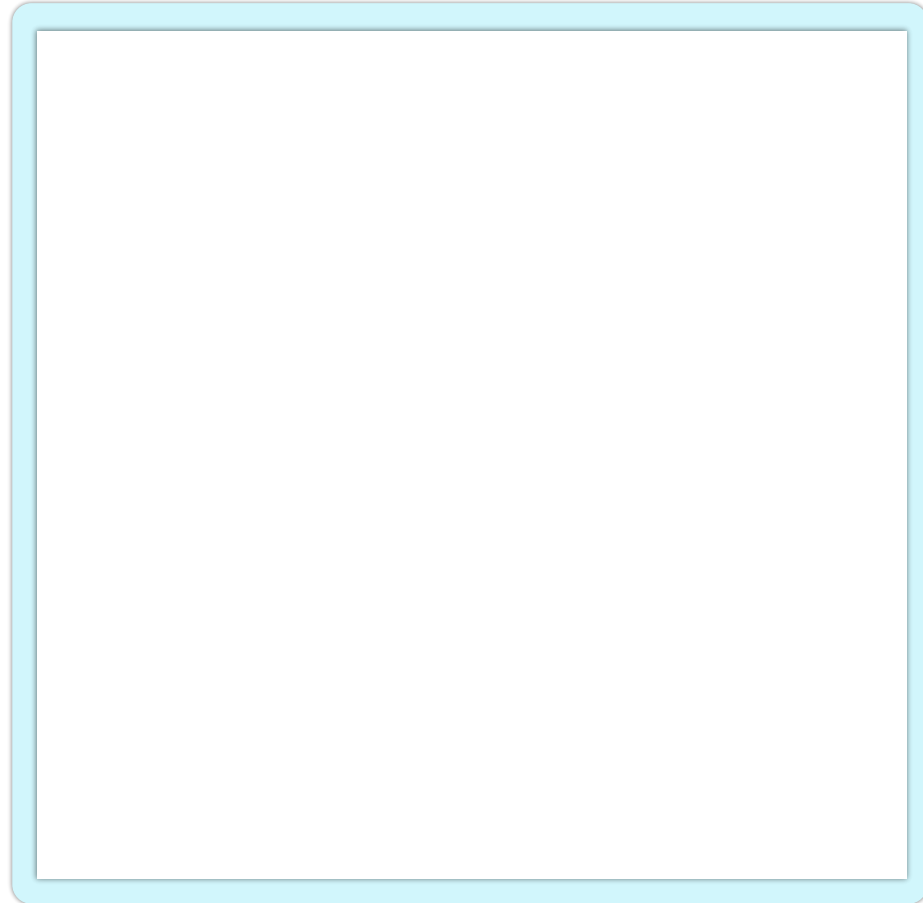
Write your response below:



Short Answer Question

2. How does the NSR contribute to Russia's strategic position in the Arctic?

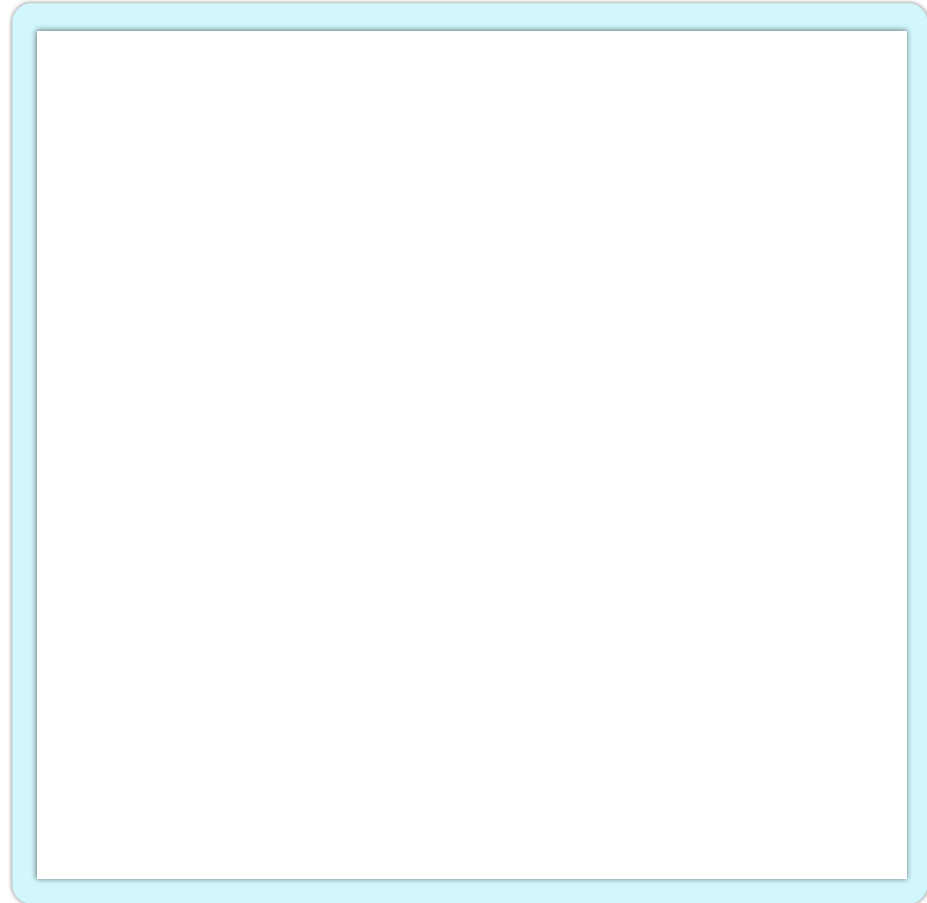
Write your response below:



Short Answer Question

3. What is the author's argument for the need for a sustainable and responsible approach to the development of the NSR?

Write your response below:



Open Ended Question

Write your answer below. Then, when instructed, discuss your answers with your partner or group. Use the second box to take notes on what their answers were in the space provided.

1. The text discusses the potential for conflict over access to and exploitation of resources in the Arctic. How might this relate to conflicts over resources in your own community or in the world at large?

Your Answer:

What did your partner or group say?

Open Ended Question

Write your answer below. Then, when instructed, discuss your answers with your partner or group. Use the second box to take notes on what their answers were in the space provided.

2. The text highlights the importance of considering the environmental and cultural impacts of development. Think about a time when development in your community or elsewhere had both positive and negative consequences. How did those consequences play out?

Your Answer:

What did your partner or group say?

Open Ended Question

Write your answer below. Then, when instructed, discuss your answers with your partner or group. Use the second box to take notes on what their answers were in the space provided.

3. The text explores the challenges of navigating a changing environment. How have you personally navigated a significant change in your life, and what lessons did you learn from that experience?

Your Answer:

What did your partner or group say?

Additional Engagement Slides to Add Anywhere



Turn and Talk

Turn to your partner and share the most interesting thing you've learned so far.



Turn and Talk

Does the reading remind you of something else you've learned in this class? If so, what?

